



HOG HEARSE

Removing dead stock from the hog barn has never been an easy or pleasant task. This particular piece of equipment can easily and safely be operated by anyone in the barn. The increasing use of loose housing for sows and the advent of large group housing for finishing pigs means that dead stock may have to be moved longer distances, and in the presence of large groups of live animals. This represents a greater physical strain on the stockperson, as well as an increased risk of injury if the hearse is not stable. The drawings attached are for a hearse designed for use with sows, but can be used in a finishing barn using lighter materials and reduced height. (3' high instead of 4" as shown on diagram) For use with sows, each winch should have a lift capacity of 1400 lbs. For use with fattening pigs a 1000lb capacity is adequate. The center winch is used only for removing sows from a farrowing crate or gestation stall, and is therefore not required in a finishing barn.

SPECIFICATION

Frame: 2" box section. 1/4" thick for sows. 1/8" thick for fatteners.
Supports: 2" box section as above

APPROXIMATE MATERIAL COSTS	SOW VERSION	FINISHER
	\$	\$
40 feet of 2" box section @ \$8.00/foot =	320.00	
38 feet of 2" box section @ \$4.50/foot =		171.00
3 no 1400lb winches @ \$34 each =	102.00	60.00
4 no 6" diameter wheels =	100.00	100.00
3 no 10 foot lengths of 1/4" cable =	10.00	9.00
TOTAL =	534.00	340.00

DETAIL

The winches must be securely fastened to the frame, and the cable requires a guide to ensure a smooth lift, using a "U" bolt welded to the frame as shown in the diagram.

USING THE HEARSE

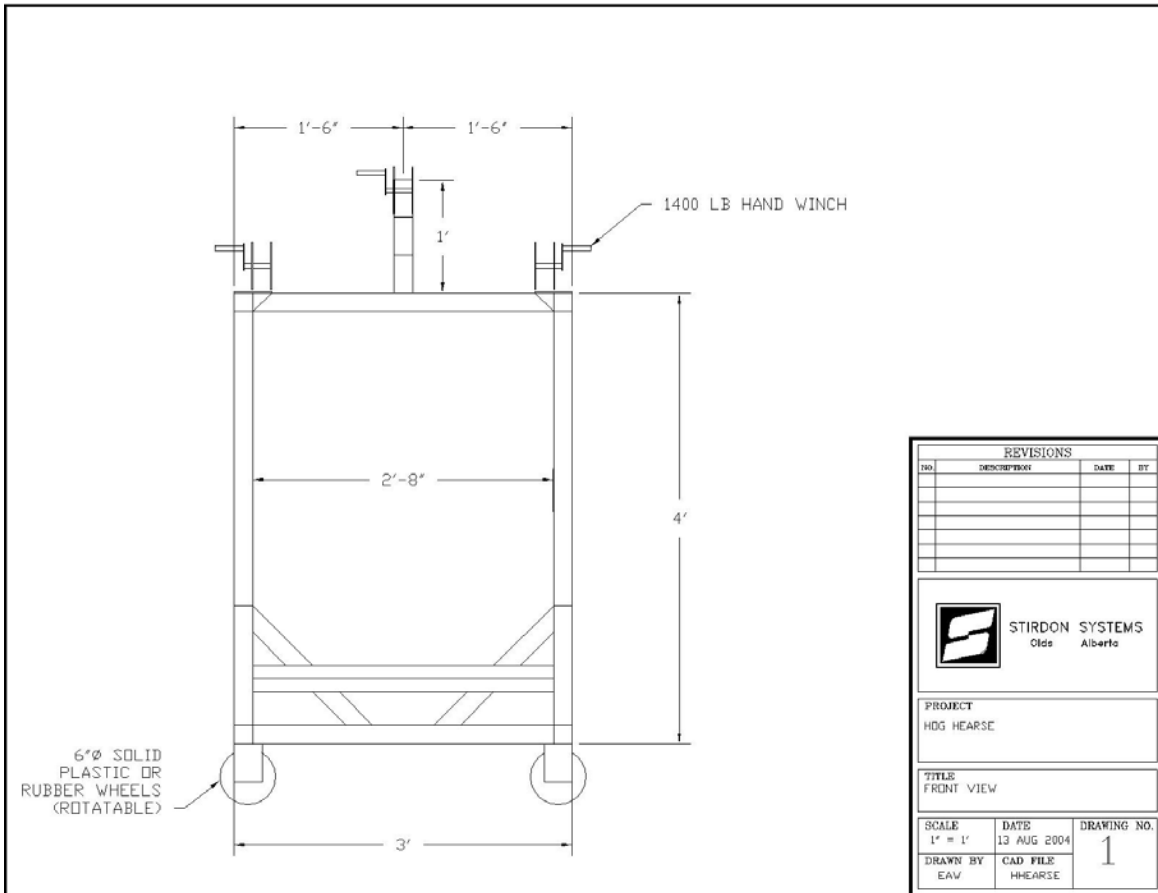
Step 1: The centre winch cable is connected to one or both rear legs of the sow. Use this winch to draw the animal out of the crate and into the alley.

Step 2: Once the animal is in the alley, connect the cables from the left and right winches respectively, one to the rear leg, and one to the front leg. These winches are used to lift the animal off the floor. Once the sow is locked into position on the hearse, the animal can safely be moved.

Note: Hog hearse not to be used on live animals

VIDO SWINE TECH GROUP

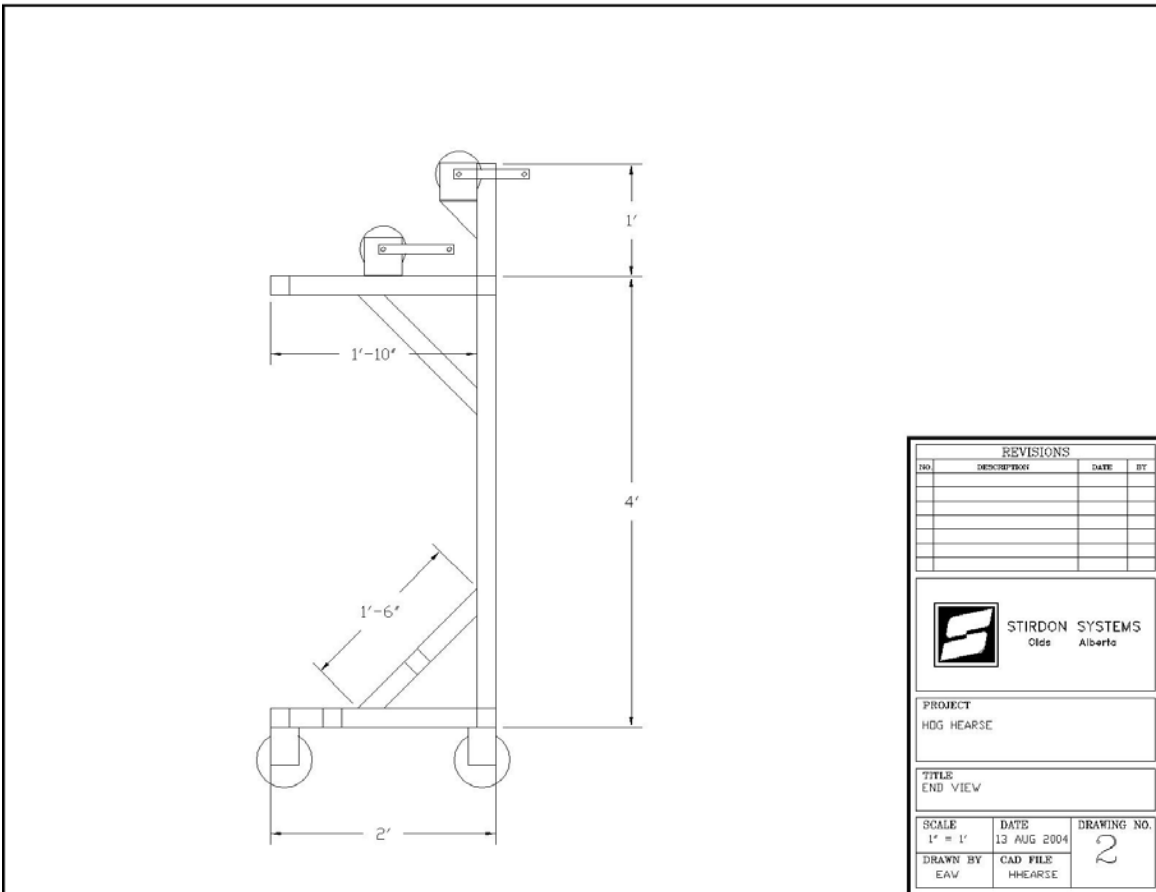
Linking knowledge to practical solutions



C:\acad\Bill Hutchings\hoghearse.dwg, Layout1, 9/14/2004 9:02:51 AM

VIDO SWINE TECH GROUP

Linking knowledge to practical solutions

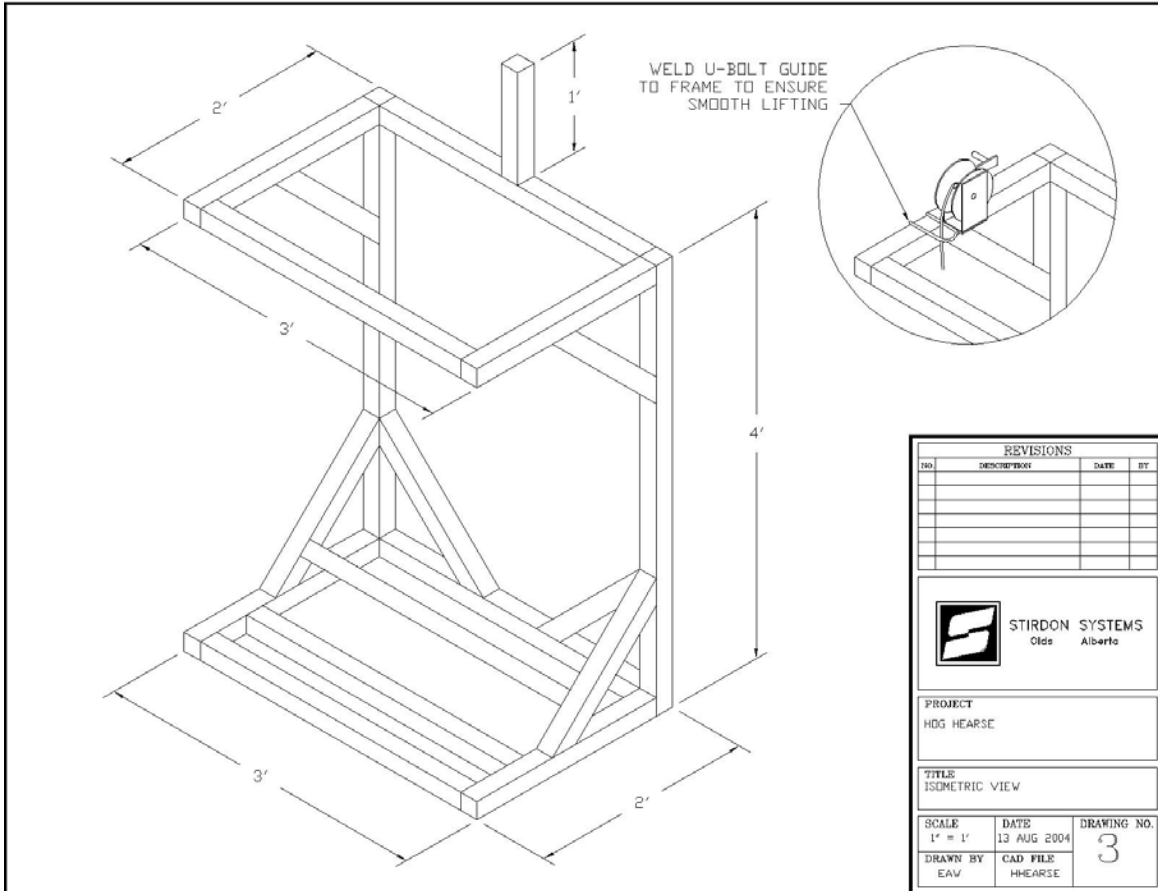


REVISIONS			
NO.	DESCRIPTION	DATE	BY

 STIRDON SYSTEMS Olds Alberta		
PROJECT HDG HEARSE		
TITLE END VIEW		
SCALE 1" = 1'	DATE 13 AUG 2004	DRAWING NO. 2
DRAWN BY EAV	CAD FILE HH-EARSE	

C:\acad\Bill Hutchings\hghearse.dwg, Layout2, 9/14/2004 9:03:03 AM

Linking knowledge to practical solutions



C:\acad\Bill Hutchings\hoghearse.dwg, Layout3, 9/14/2004 9:03:14 AM

VIDO SWINE TECH GROUP

Linking knowledge to practical solutions